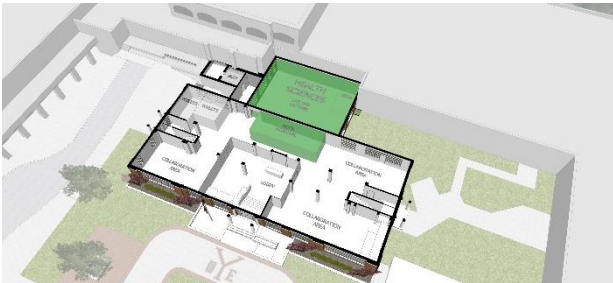


THE VISION

The vision is to make the original CH Yoe building a functional part of the Yoe High School campus again by integrating the future and the past in a unique way. The building from the 1920's will be home to some of the most modern and future-ready Career and Technical Education (CTE) programs currently being offered in K-12 education. Based on input from students, parents, community leaders, board members, high school campus leadership, high school teachers, and district leadership, the facility is planned to house Health Science, Business & Finance, Computer Science, Criminal Justice, and Education programs along with dual credit facilities, and collaboration spaces. A consensus arose around the need to have hands on and immersive CTE facilities for CISD student to gain real life practical knowledge and skills in fields that offer some of the best career opportunities in the world today and into the future.



The vision starts with a small portion of the existing parking being removed to allow for the creation of a small green space/pedestrian buffer that will make approaching the building more inviting and safer. The exterior of the building will retain its historical appearance, but will be refreshed with repairs and cleaning of the masonry, new energy efficient windows, and a new roof.



The main entry will open into a lobby which will also serve as a safety and security access control point. At this time, it is anticipated that the first floor will house a general collaborative space and a Health Science lab that will recreate the hospital environments in which medical professionals work.

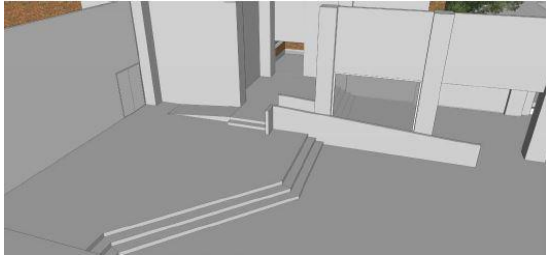


The second level is anticipated to house an Education Lab and a Criminal Justice Center, including a forensic science lab. The existing auditorium space is envisioned to become a multipurpose space offering uses such as student commons, student/staff collaboration, dual credit learning, lecture hall, and board room.



The third level is anticipated to have a Business & Finance Lab and a Computer Science Center, including a mock main technology distribution center. The mezzanine overlooking the auditorium is planned to be restored, to the extent possible, to its original layout with the original chairs reinstalled as a nod to the historical aspect of the building. A unique method of providing further education is envisioned by providing museum style wall graphics and

displays in the corridors on every floor to honor and educate on the history of the building, the Yoe Family, Career and Technical Education, and other similar topics.



An indoor connection providing direct access between the existing Yoe High School and original Yoe high School has been conceived to create a stronger connection between the two buildings. The building systems, including air conditioning, electrical, plumbing, insulation, etc., will all be replaced to comply with modern building and energy code requirements. Lastly, the entire facility will be upgraded to be handicap accessible, including the

connection to Yoe High School, allowing full access to the amenities for each and every CISD student, teacher, or visitor.